





Stylish, comfortable and durable DOG gear from young Danish brand

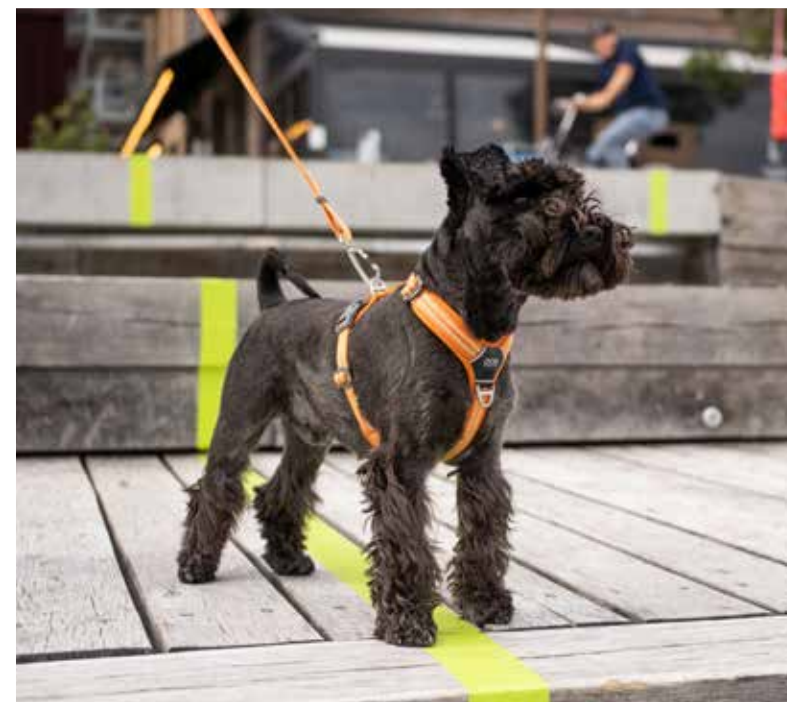
We design and manufacture high-quality DOG gear suitable for the everyday urban and off-road adventures with your dog. Our mission is to develop comfortable and durable dog products featuring a functional and attractive design. It's the balanced mix of quality, functionality and classic Danish design that differentiate us from other brands.

Inspired by the active life with our four-legged friends we only use the best materials available and always listen to feedback from our customers to ensure that all product details are perfected. Every returning customer is proof that we are walking the right path.

The DOG Copenhagen brand was founded in 2015 and today our products can be purchased through selected retailers in 20 countries and still counting. You can find the retailers closest to you from our online shop-finder.

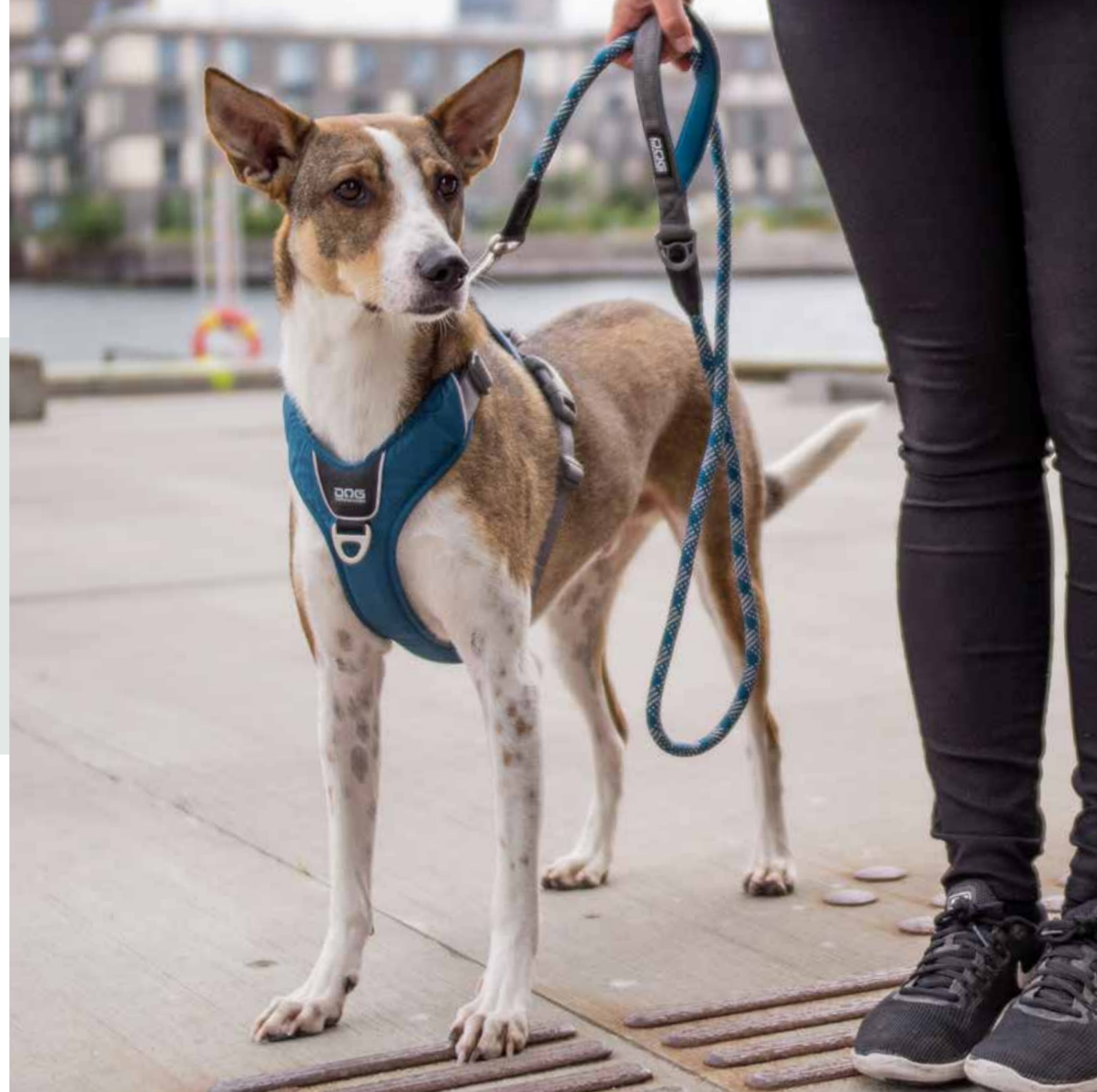
If you are looking for a new dog harness, dog collar or dog leash and expect a little more, we invite you to take a closer look at our product range. We only collect happy customers!

Sincerely yours,
DOG Copenhagen



COMFORT WALK PRO™

HARNES



The **Comfort Walk Pro™** Harness from **DOG Copenhagen** is a strong and lightweight everyday harness made of durable stain and water-resistant materials with soft breathable padding. The harness is easy to fit and put on and comfortable for the dog to wear during any level of exercise. The easy-grab handle and two leash attachment options, one on the dog's back for everyday walks and one on the dog's chest, provides additional control and flexibility.

Try our matching range of leashes and collars for the complete set up!

KEY FEATURES

- Comfortable everyday harness that is easy to fit and put on
- Four points of adjustment to ensure optimal fit for each individual dog
- Soft breathable padding on chest, back and belly panels for comfortable daily use
- The ergonomic design is gentle on the dog's back and neck areas
- Easy-Grab handle on the back for quick control
- Two leash attachment options - one on the dog's back and one on the dog's chest
- Efficient 3M™ reflective trim for enhanced visibility in low-light conditions
- Aluminium hardware - nothing on the harness will rust
- Separate ID attachment point
- Designed in Denmark / Made in China

Leash attachment
(D-ring) - dog's chest

Chest and neck
adjustment

Leash attachment
(D-ring) - dog's back

Easy-Grab handle + ID-tag
attachment point

Original 3M Reflective™ Trim

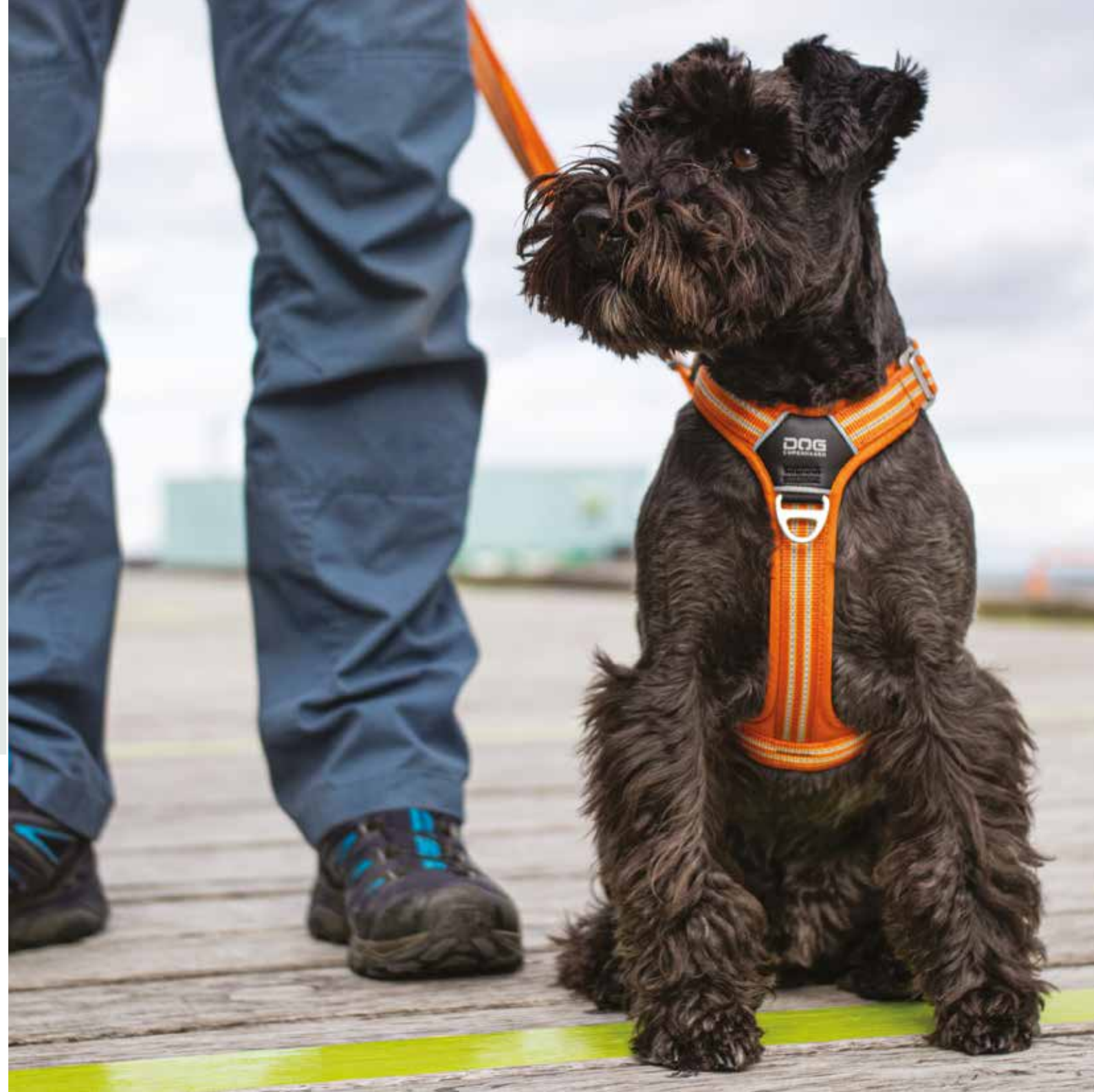
Strong Duraflex™ buckle

Strong double
stitching's

WASHING INSTRUCTIONS: Hand wash in warm water with mild detergent / Machine wash 30°C (use laundry bag). Let the product air dry

COMFORT WALK AIR™

HARNES



COMFORT WALK AIR™ HARNESS

The **Comfort Walk Air™** harness from **DOG Copenhagen** is a strong and lightweight everyday harness made of durable stain and water-resistant materials with soft breathable padding. The harness is easy to fit and put on and comfortable for the dog to wear during any level of exercise. The easy to use aluminium fitting allows you to open/close the neck-strap - convenient for dogs that prefer not to have a harness pulled over the head.

Try our matching range of leashes and collars for the complete set up!

KEY FEATURES

- Comfortable everyday harness that is easy to fit and put on
- Easy to use aluminium fitting to open/close the neck-strap
- Four points of adjustment to ensure optimal fit for each individual dog
- Soft breathable padding on chest, back and belly panels for comfortable daily use
- Two leash attachment options - one on the dog's back and one on the dog's chest
- Ergonomic design gentle on the dog's back and neck areas
- Efficient 3M™ reflective trim for enhanced visibility in low-light conditions
- Aluminium hardware - nothing on the harness will rust
- Separate ID tag attachment point
- Designed in Denmark / Made in China

Easy to use aluminium buckle to open/close the neck-strap

Leash attachment (D-ring) - dog's chest

Neck and chest adjustment

Leash attachment (D-ring) - dog's back

Strong Duraflex™ buckle

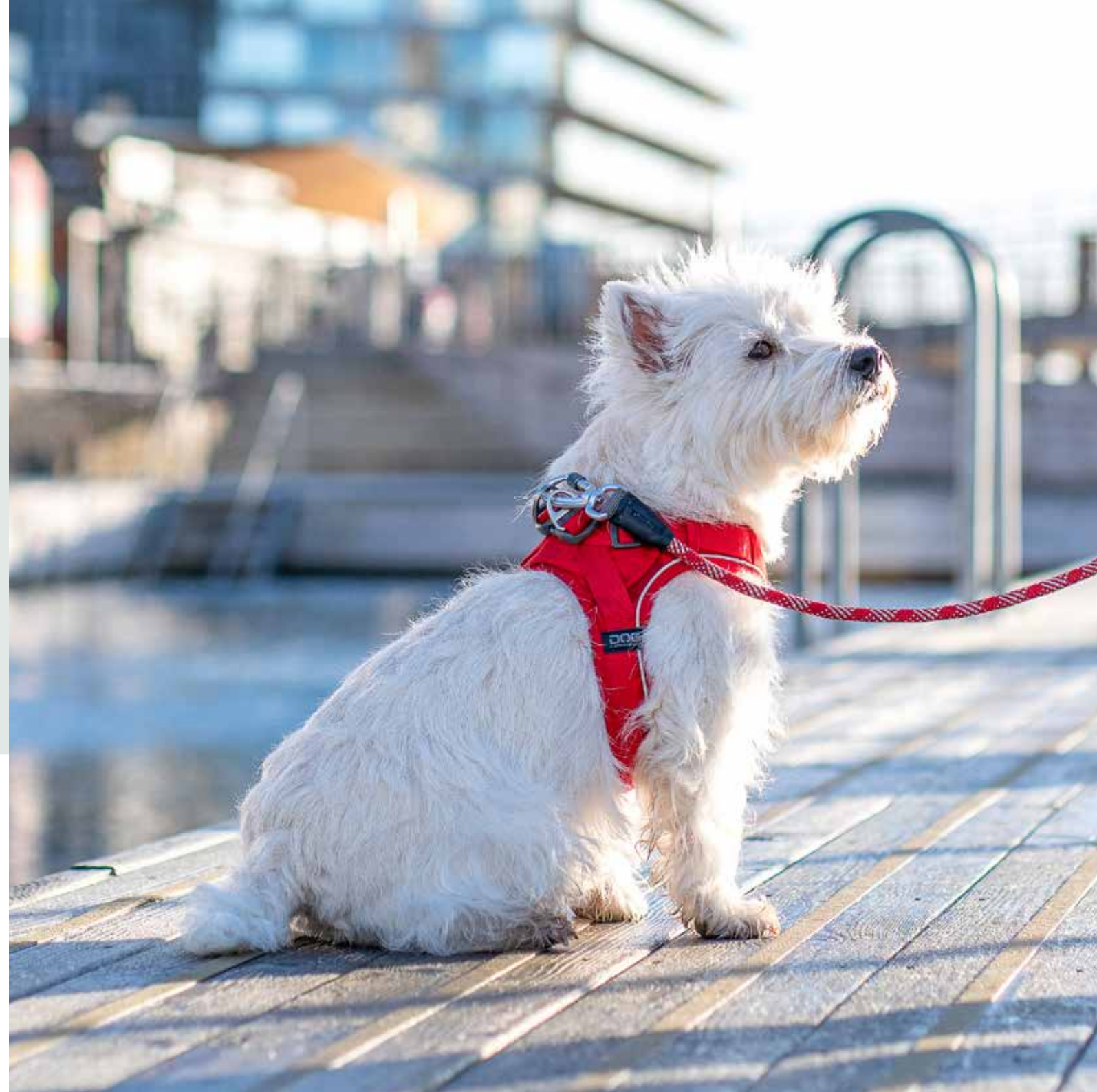
Aluminium triangle for exact webbing guidance

Original 3M™ Reflective Trim

WASHING INSTRUCTIONS: Hand wash in warm water with mild detergent / Machine wash 30°C (use laundry bag). Let the product air dry

COMFORT WALK GO™

HARNES



COMFORT WALK GO™

HARNES

The **Comfort Walk Go™** harness from **DOG Copenhagen** is a comfortable and lightweight step-in harness designed for small and medium sized dogs. Made from durable stain and water-resistant materials with soft breathable padding. The harness is easy to use and comfortable for the dog to wear during any level of exercise. The adjustable straps, large velcro-panel and 3D shape ensure safe walks and adaptation to the individual dog's body shape.

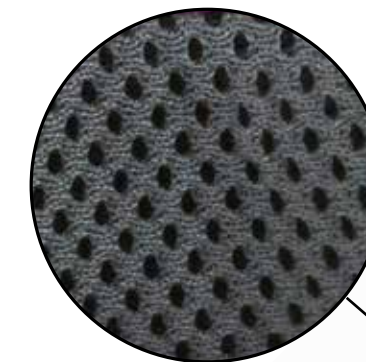
Try our matching range of leashes and collars for the complete set up!

KEY FEATURES

- Comfortable step-in harness that is easy to fit and put on
- 3D shape with large velcro-panel ensure adaptation to the dog's body shape
- Adjustable strap system with dual d-rings ensure added safety and adaptation to the individual dog
- Ergonomic design protects the dog's back and neck areas
- Durable stain and water-resistant materials with soft breathable padding
- Efficient 3M™ reflective trim for enhanced visibility in low-light conditions
- Plastic and aluminium hardware - nothing on the harness will rust
- Designed in Denmark / Made in China



Soft and breathable padding



3D shape with large velcro-panel ensure adaptation to the dog's body shape



WASHING INSTRUCTIONS: Hand wash in warm water with mild detergent / Machine wash 30°C (use laundry bag). Let the product air dry

URBAN EXPLORER™

COLLAR



The **Urban Explorer™** collar from **DOG Copenhagen** is a strong lightweight collar made of durable stain and water resistant materials. The unique design provides full-length soft and breathable padding for comfortable daily use. The dual aluminium D-rings and efficient 3M™ reflectors ensure safety.

Try our matching range of leashes and harnesses for the complete set up!

KEY FEATURES

- Comfortable collar with full-length soft and breathable padding
- Ergonomic design gentle on the dog's throat and neck area
- Dual D-rings for added safety (attach leash to both)
- Efficient 3M™ reflective trim for enhanced visibility in low-light conditions
- Aluminium hardware - nothing on the collar will rust
- Separate ID attachment point
- Designed in Denmark / Made in China



WASHING INSTRUCTIONS: Hand wash in warm water with mild detergent / Machine wash 30°C (use laundry bag). Let the product air dry

URBAN STYLE™

COLLAR



The **Urban Style™** collar from **DOG Copenhagen** is an easy to use everyday collar made of soft and durable nylon webbing with efficient 3M™ reflective trim and equipped with strong and lightweight aluminium hardware and separate ID attachment point.

Try our matching range of leashes and harnesses for the complete set up!

KEY FEATURES

- Easy to use everyday collar
- Efficient 3M™ reflective trim for enhanced visibility in low-light conditions
- Aluminium hardware - nothing on the collar will rust
- Separate ID tag attachment point
- Designed in Denmark / Made in China

Original 3M™ Reflective Trim

Separate ID attachment point

Durable aluminium slider for length adjustment

Strong Duraflex™ buckle

Aluminium hardware - nothing on the collar will rust

WASHING INSTRUCTIONS: Hand wash in warm water with mild detergent / Machine wash 30°C (use laundry bag). Let the product air dry

S	M	L
26-36 2 cm width	36-50 2.5 cm width	50-66 2.5 cm width

URBAN TRAIL™

LEASH



URBAN TRAIL™ LEASH

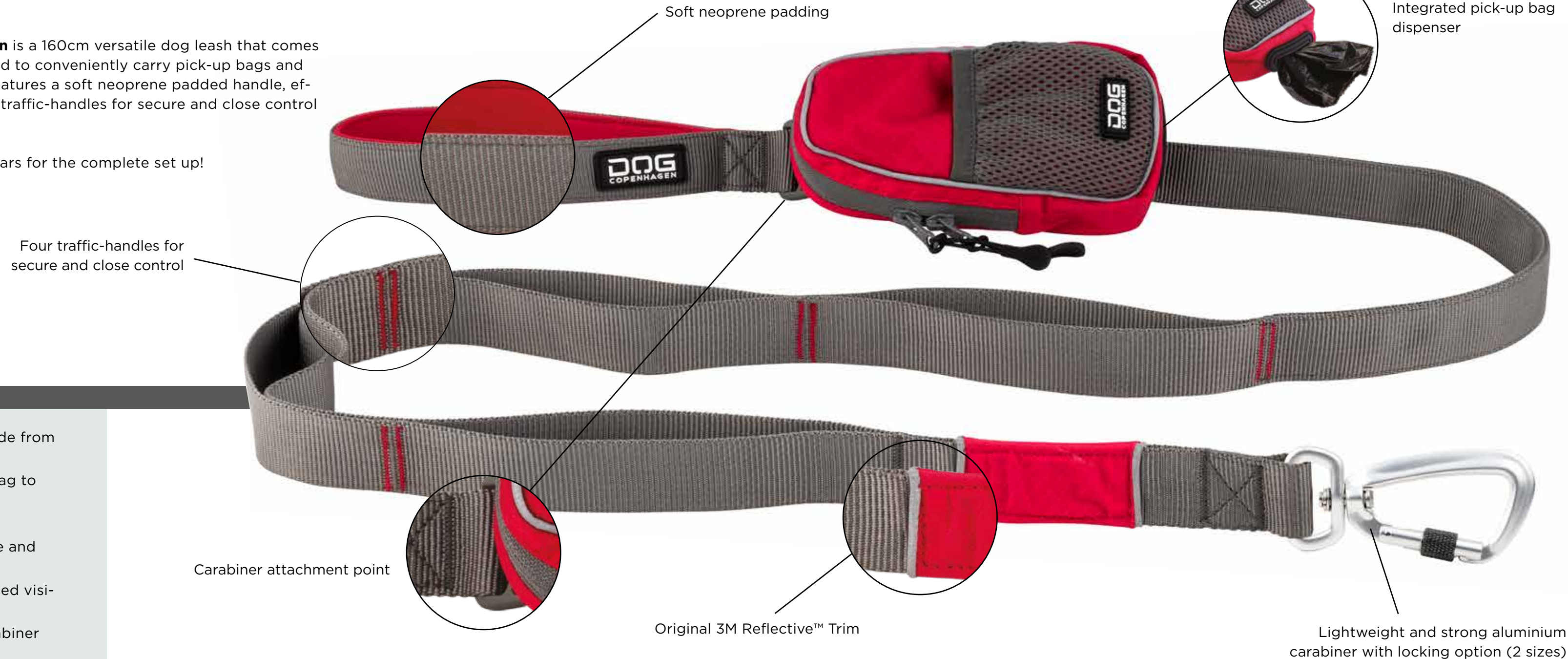
The **Urban Trail™** leash from **DOG Copenhagen** is a 160cm versatile dog leash that comes with our Pouch Organizer™ leash bag included to conveniently carry pick-up bags and treats. Two products in one! The leash also features a soft neoprene padded handle, efficient 3M™ reflective trim, and four different traffic-handles for secure and close control making this an ideal urban walk leash.

Try our matching range of harnesses and collars for the complete set up!

KEY FEATURES

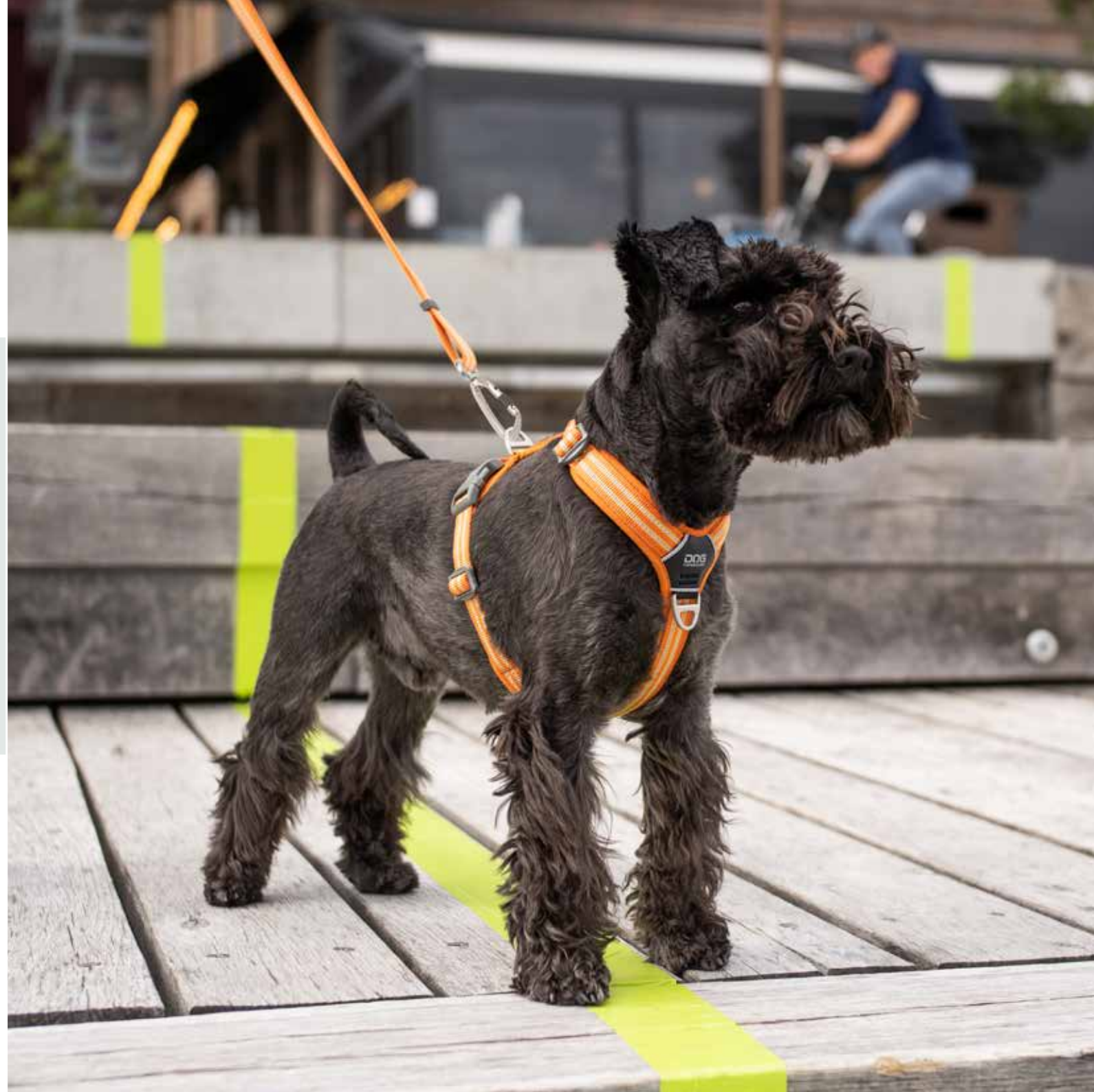
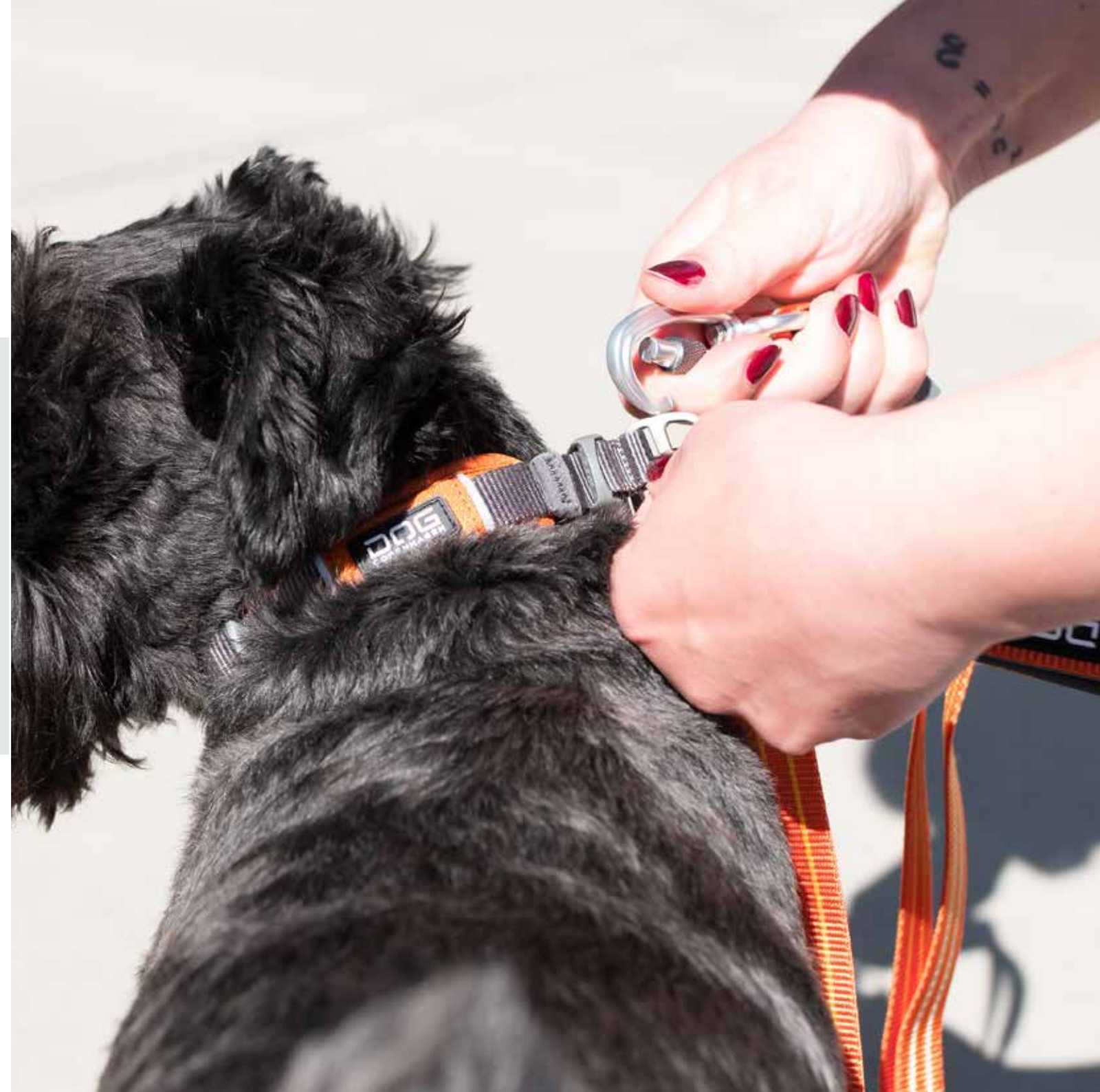
- 160cm (63inch) versatile dog leash made from soft nylon webbing
- Includes our Pouch Organizer™ leash bag to carry pick-up bags and treats
- Integrated pick-up bag dispenser
- Four different traffic-handles for secure and close control
- Efficient 3M™ reflective trim for enhanced visibility in low-light conditions
- Lightweight and strong aluminium carabiner with locking option (2 sizes)
- Designed in Denmark / Made in China

WASHING INSTRUCTIONS: Hand wash in warm water with mild detergent / Machine wash 30°C (use laundry bag). Let the product air dry



URBAN FREESTYLE™

LEASH



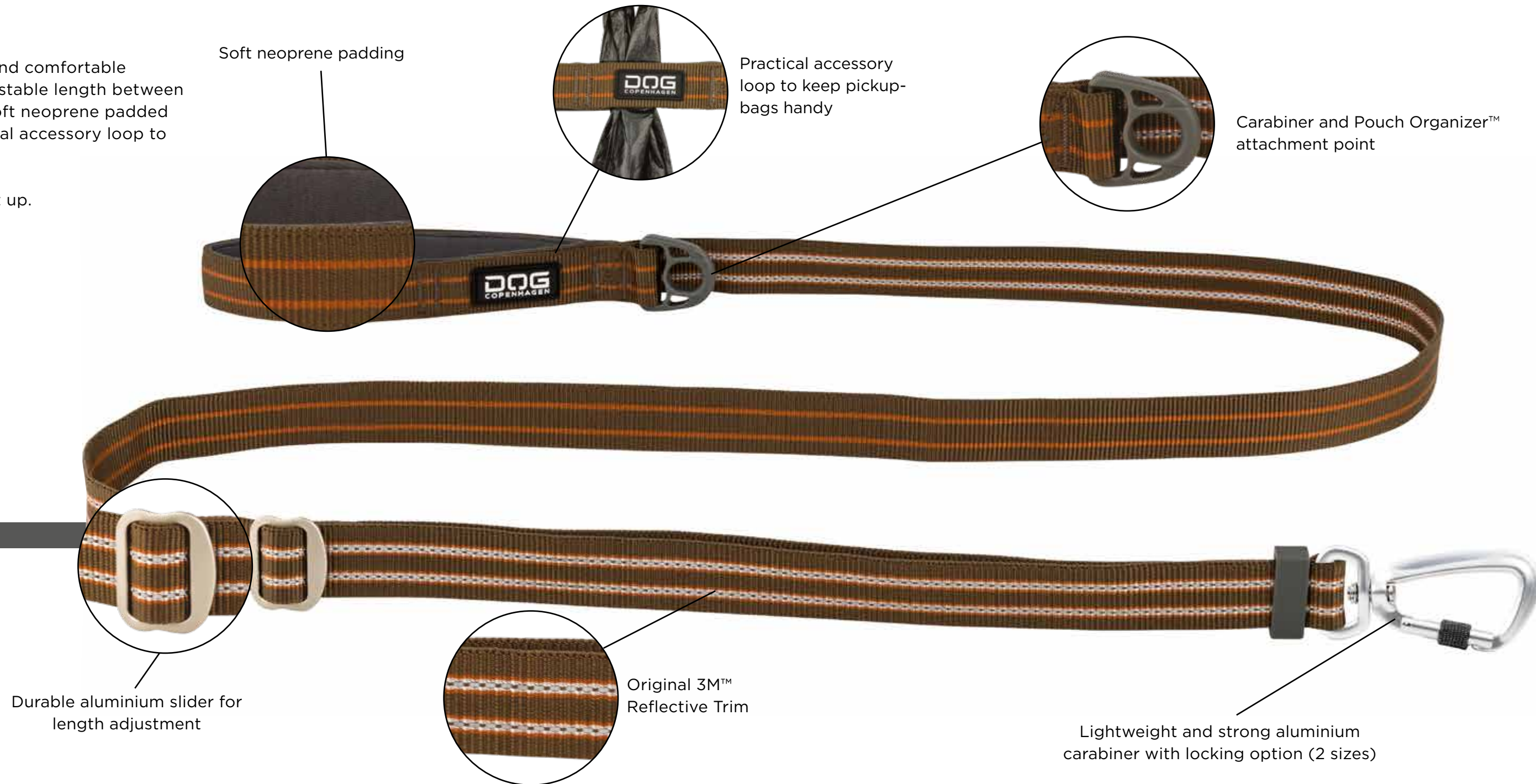
The **Urban Freestyle™** leash from **DOG Copenhagen** is a lightweight and comfortable everyday leash made from soft and durable nylon webbing with adjustable length between 115cm and 200cm - easily adjusted on the go! The leash features a soft neoprene padded handle, efficient 3M™ reflective trim, aluminium hardware and practical accessory loop to keep your pickup-bags ready to use.

Try our matching range of harnesses and collars for the complete set up. The leash is compatible with our Pouch Organizer™ leash bag.

KEY FEATURES

- Adjustable length between 115-200cm / 45-79inch
- Soft and comfortable neoprene padded handle
- Practical accessory loop to keep pickup-bags ready to use
- Efficient 3M™ reflective trim for enhanced visibility in low-light conditions
- Lightweight and strong aluminium carabiner with locking option (2 sizes)
- Designed in Denmark / Made in China

WASHING INSTRUCTIONS: Hand wash in warm water with mild detergent / Machine wash 30°C (use laundry bag). Let the product air dry



URBAN ROPE™

LEASH



URBAN ROPE™ LEASH

The **Urban Rope™** leash from **DOG Copenhagen** is a 160cm lightweight and comfortable everyday leash made from soft and durable nylon rope. The leash features a comfortable neoprene padded handle, accessory D-ring, efficient 3M™ reflective trim and lightweight aluminium carabiner with locking option.

Try our matching range of harnesses and collars for the complete set up.
The leash is compatible with our Pouch Organizer™ leash bag.

KEY FEATURES

- 160cm (63inch) dog leash made from soft and durable nylon rope
- Soft and comfortable neoprene padded handle
- Efficient 3M™ reflective trim for enhanced visibility in low-light conditions
- Lightweight and strong aluminium carabiner with locking option (2 sizes)
- Designed in Denmark / Made in China

WASHING INSTRUCTIONS: Hand wash in warm water with mild detergent / Machine wash 30°C (use laundry bag). Let the product air dry



Urban Rope™ Leash - Length (cm)

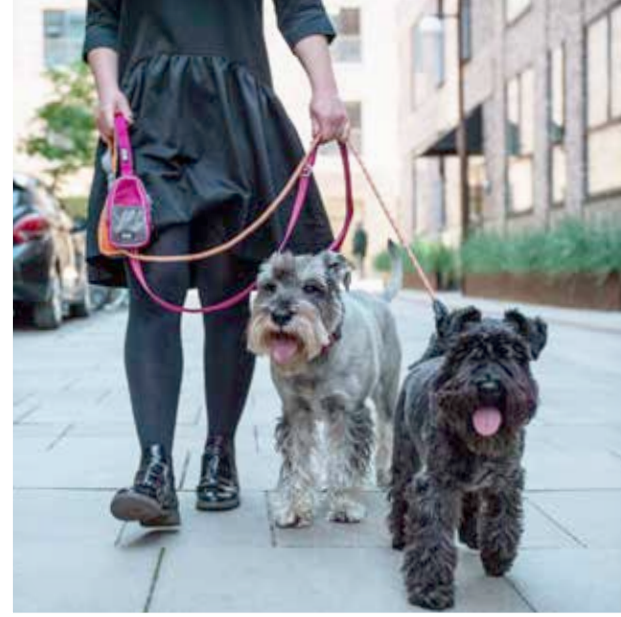
160cm Length / 8mm rope diameter
Small carabiner

160cm Length / 11mm rope diameter
Large carabiner

S

L

POUCH ORGANIZER™



POUCH ORGANIZER™

The **Pouch Organizer™** leash bag from **DOG Copenhagen** is perfect to carry pick-up bags and treats while walking your dog! The build-in dispenser keeps pick-up bags ready to use and two handy mesh-pockets are suitable to store your treats, keys or credit cards on the go. The durable and water-resistant nylon fabric with efficient 3M™ reflective trim helps keeping the content secure and dry.

The Pouch Organizer™ is attachable to any DOG Copenhagen leash!

KEY FEATURES

- Addable storage for your DOG Copenhagen leash
- Carry pick-up bags, treats, keys, credit cards
- Integrated pick-up bag dispenser
- Efficient 3M™ reflective trim for enhanced visibility in low-light conditions
- Designed in Denmark / Made in China

Two handy mesh-pockets
(one inside)

Original 3M™
Reflective Trim

Dual zippers

Two velcro
fastening points for
leash attachment

Integrated pick-up bag dispenser

WASHING INSTRUCTIONS: Hand wash in warm water with mild detergent / Machine wash 30°C (use laundry bag). Let the product air dry



Available at



Stay connected @dogcopenhagen



DESIGNED IN DENMARK | WWW.DOGCOPENHAGEN.COM




DOG[®]
COPENHAGEN